

Te Rau Aroha - Waihi Beach Camp and Retreat Centre

COROMANDEL

Location:

48 to 66 Seaforth Road, Waihi Beach. The camp covers three acres and is just a few minutes walk to the surf and shops. Ideal for school camps, Church groups, families, weddings, reunions, retreats and many other activities.

Phone: (07) 863 5834

Fax: (07) 863 5832

Email:

rodney@waikatoanglican.org.nz

Web site:

www.waihibeachchristiancamp.org.nz



Main Camp - Te Rau Aroha Complex

- 80 bed complex
- Eight bunkrooms sleeping nine each
- Two leaders rooms sleeping two each
- Two leaders rooms sleeping three each
- One self contained cooks flat sleeping two to three

The camp is self catered, however, local caterers are available. Contact the camp for details.

Well appointed dining room and kitchen, walk in chiller, chest freezer, one domestic stove and two commercial gas stoves with electric ovens, conveyor toaster.

Pots, pans, utensils, crockery and cutlery supplied.

Separate dishwashing room with commercial dishwasher.

Two lounges, one small lounge attached to the dining room, and a larger lounge suitable for meetings etc with flat screen TV, DVD and digital Freeview.

The main camp has well appointed modern ablution facilities including a small laundry with coin operated washing machine.

The Lodge

Fully self contained lodge sleeping a maximum of 20 in eight bedrooms.

Four toilet and shower rooms, one is wheelchair accessible.

This well appointed facility is great for small groups or large families. It can also be booked in conjunction with the main camp to increase available beds.

The Lodge has a TV with DVD and digital Freeview.

Other accommodation

Two self contained tourist flats sleeping four to six. The flats each have a TV with DVD and digital Freeview.

One self contained chalet sleeping eight. The chalet has a TV and DVD.

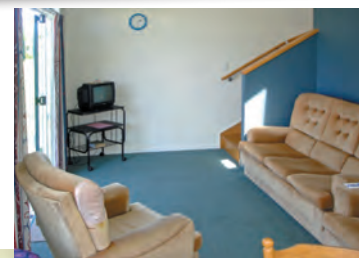
Other facilities

Chapel - a peaceful area for worship and a range of activities. Wheelchair access shower and toilet. Small kitchenette. Can be used for overflow sleeping space for up to 20.

Recreation hall - a good area for indoor games or larger meetings. 3-phase power outlet available.

Four powered caravan/tent sites available for groups to use.

Large playing field.



Local activities

Explore the Gold Mining history of the Karangahake Gorge, tours of Waihi Gold Mines, Museum, tramping and bush walks, historic steam train, surf and sand, Katikati Bird Park, hot pools and much more. We can also assist with some programme material and leadership.

The camp manager lives onsite and will help you settle in and provide assistance as necessary.

A Chaplain is available on request.



CHRISTIAN CAMPING
NEW ZEALAND